

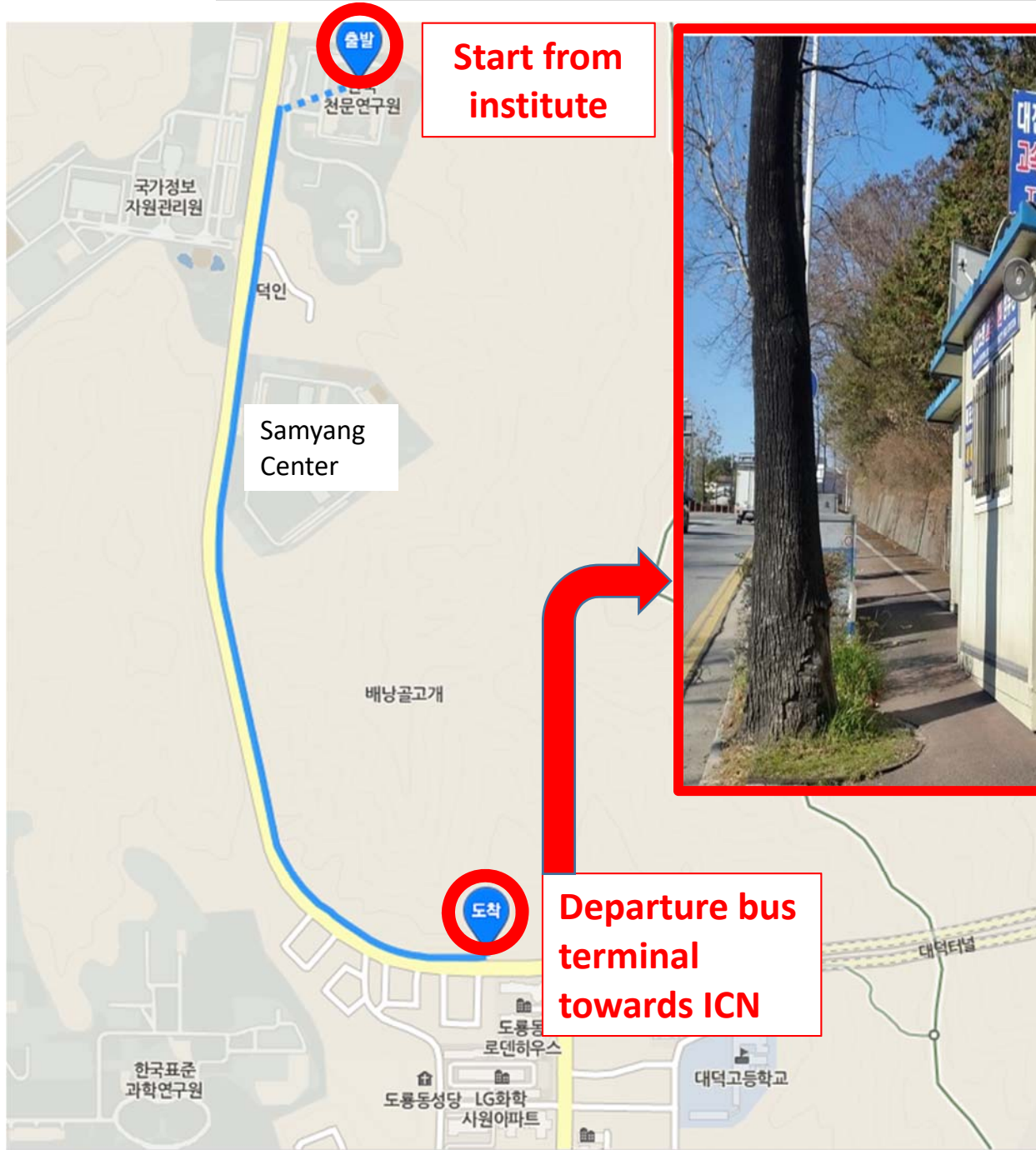
From hotel to Bus stop (government complex building) for limousine bus toward ICN (airport)

It will take about **20mins by walk** or about **4mins by taxi**.

Taxi fare is around **3500 (won)**.



From KASI to Bus stop (doryong) for limousine bus toward ICN (airport)



Start from institute



Departure bus terminal towards ICN



It will take about **25 mins** by walk:

Turn **left** at main gate and go down along the road. Then, you can find a bus stop looking like above image.